



无锡文森特阀业有限公司
Wuxi Vincent Valve Manufacture CO.,LTD

苏州文森特自控阀门有限公司
Suzhou Vincent Control Valve Co.,LTD

工厂地址：无锡市滨湖区胡埭工业园北区联合路8号
Add: No.8 Lianhe Road,North Area of Hudai Industrial Park ,Binhu District, WUXI,China.

TEL: +86 (0)510 85580506 86 (0)510 85580509

FAX: +86 (0)510 85580509

Email: admin@vctvalve.com

Http:// www.vctvalve.com

注意：尽管我们已经尽了最大努力确保该出版物的精确性，但若仍存在任何错误或者缺漏，我们将无需对此负责。该出版物不构成合同基础。
VCV公司保留不预先通知变更产品权利。最终解释权归“无锡文森特有限公司”。

Note: We tried our best to make sure the accuracy of this version, but do not take the responsibility if still some mistakes inside. And this catalogue is not regarded as the part of the contract. VCV has the right to change the product without any inform. The final interpretation of all is belongs to Vincent Control Valve.

无锡文森特阀业有限公司
Wuxi Vincent Valve Manufacture CO.,LTD
苏州文森特自控阀门有限公司
Suzhou Vincent Control Valve Co.,LTD

文森特简介

Vincent Control Valve

文森特是专门从事工业化控制阀门的研发、制造、销售的科技型经济实体。文森特拥有不断创新的技术团队，高精尖的生产设备，严格的质量管理体系，周到迅捷的技术服务。

文森特产品中近60%远销欧美及东南亚市场并得到海外客户的一致好评；国内销售市场主要以通讯、电力、冶金、燃气、水处理、制冷和换热、海水淡化等行业为主，特别是为中国人民武装警察部队、TCL、华为、首钢等提供了优质的产品，赢得了至高无上的荣誉。

“头顶科技蓝、脚下青草绿、共赢地球村”是我们执着的追求和企业锐意进取所坚持的崇高理念！我们本着“精细、精致、精心；更快、更强、更优；最好、最廉、最新”的经营宗旨，为我们辉煌的未来而不懈奋斗！

Vincent is a technological economic entity that specializes in the R&D, manufacture and marketing of the industrial control valves. Vincent has a professional team keeping on innovation, high efficient machines, scientific quality-managing system and considerate and prompt technological service.

Almost 60% of our products in our affiliated enterprises are exported to Europe, the United States and Southeast Asia markets and gain praise both at home and abroad; our domestic sales markets mainly concentrate on the telecommunications, power, metallurgy, gas, water treatment, HVAC, sea water desalination and other industries etc., Especially the high-quality products for CAPF(Chinese People 's Armed Police Force), TCL, Huawei, Capital Iron and Steel Company winning supreme honor for this.

Innovation of science & technology;
Protection of environment & ecology;
Evolution of experience & sociology
We are fighting for our brilliant future!


CERTIFICATES AND QUALIFICATIONS

证书及资质

 国家专利和发明
National Patent & Invention

 消防检测报告
Fire Testing Report

 饮用水安全认证
WRAS approved

 特种设备生产许可证
Manufacture License of Special Equipment

 消防安全认证
CCCF Certificate



RESEARCH& DEVELOPMENT

设计和研发

文森特采用一流的工程设计，生产和营销工具。研发部门借助CAD辅助设计软件以及CAD3D机械设计软件(solid works 2012), 软件采用有限无模型法进行精确力学计算，从而实现更多创新。研发部门不断创新，向国家知识产权组织提出多项专利申请。

Vincent commands the best engineering ,manufacturing and marketing tools.The Research & Development department skills lean on, for the innovation , the CAD 3D mechanical design software (SolidWorks 2012) , for the mechanical calculus by finite element modelling .The Research & Development department is innovating and patents application to the Chinese Intellectual Property Organization .



TECHNICAL SERVICE 技术服务

文森特拥有一支专业的技术团队，为客户提供现场服务支持。除了关于产品的推荐，建议和销售外，文森特还提供技术支持和售后服务以保证产品所在系统的试运行和产品的维修保养。

A team of well qualified technicians provides Vincent products maintenance on site or in its industrial units. In addition to the recommendation, advice and sale of products, VCV provides technical support and assistance after delivery for commissioning and products maintenance, an available and competent after sales service.

PERMANENT QUALITY CONTROL

▶ 持续品质控制

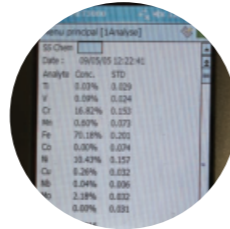
文森特使用最先进控制检测设备进行测试，液压和气压密封测试，尺寸检测，原材料检测，工作性能及寿命测试。

Vincent counts on the most developed equipments to carry out all control and testing operations: hydraulic and pneumatic air tightness testing , dimensional control ,material control,operating and resistance testing.



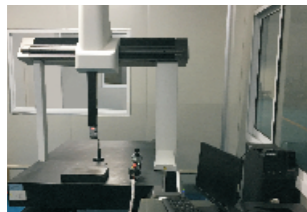
①材质成分控制Material Control

光谱仪检测，对材质进行化学元素分析。
Chemical analysis by spectrometer.



②金属硬度测试 Metal Hardness Test

力学性能分析，特别是热处理后的零件。
Mechanical property test especially after heat treatment.

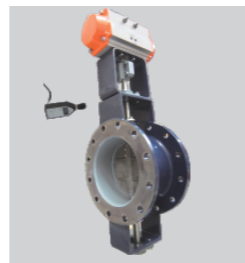


③三坐标检测 XYZ Test

运用精密仪器对零部件进行检测，保证零件尺寸、形状和形位公差满足图纸要求。
XYZ test of tolerance and size exactly according to the drawing .

④噪音测试 Noise Test

控制噪音，环境保护。
Environment protected by reducing noise of the valve .



⑤金属壁厚测试 Metal Thickness Test

壁厚测试，确保壳体承压满足设计要求。
Thickness test to ensure the shell resistance.



PERMANENT QUALITY CONTROL

▶ 持续品质控制



⑥涂层厚度测试Coating Thickness Test

控制涂层厚度，保证防腐性能。
Anti-erosion property made assurance by thickness test after Epoxy painting and coating.



⑦扭矩测试Torque Test

扭矩控制以适配执行器,延长使用寿命。
Torque control to adapt to suitable actuator enlength using life.



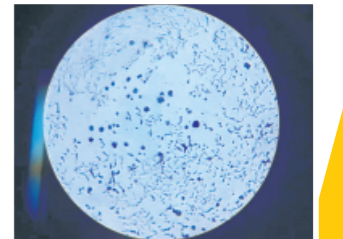
⑧压力测试Hydraulic Tests

100%双向压力测试，保证阀门的密封性能。
Bi-direction test for every single piece of valve to make sure the sealing performance .



⑨球化率测试 Rate of spheroidization

每批次铸件球化率测试，不低于四级。
Test the rate of spheroidization every batch, less than level four



⑩非金属硬度测试 Rubber &PTFE&TPEE etc Hardness Test

密封件硬度测试，确保零泄漏。
Hardness test for sealing part to zero leakage.



PRODUCTION SITE

► 生产现场

完美的生产过程不仅仅在于我们拥有先进的生产工艺设备和完善的检测手段，相比之下，我们更加注重人的品质管理，以人为本，引进优秀的技术和管理人才，使得我们的产品在制造中具备了优异的潜在价值。

We not only have advanced production equipment and perfect testing means but also pay more attention to enhance workers' quality. Besides a lot of outstanding technical development and management personnel make our production have a highly potential value.



数控车床 CNC Lathe

运用先进设备和精湛的工艺生产出合格的零部件。
Component machined by high-technology equipment and exquisite process.



加工中心 CNC Machining Center



环氧静电树脂喷涂 Epoxy Coating
专业的喷涂设备和人员保证了产品精美的外观和使用性能。
Professional worker and specified equipment to make sure the beautiful appearance and performance.



大阀装配 Special Assembly Equipment for big diameter
科学装配，省时省力，提高效率。
Scientific assembly by patented equipment improving the efficiency.



电动调试 Adjusting for electric actuator
专业人员使用专用设备对电动阀门进行调试。
Electric actuator adjusted by specified technical workers.



气动定位器调试
Adjusting for the positioned of the pneumatic actuator
精准定位任意角度，确保其接收反馈数据准确。
Exactly receive and send out the signal to make sure any position located.

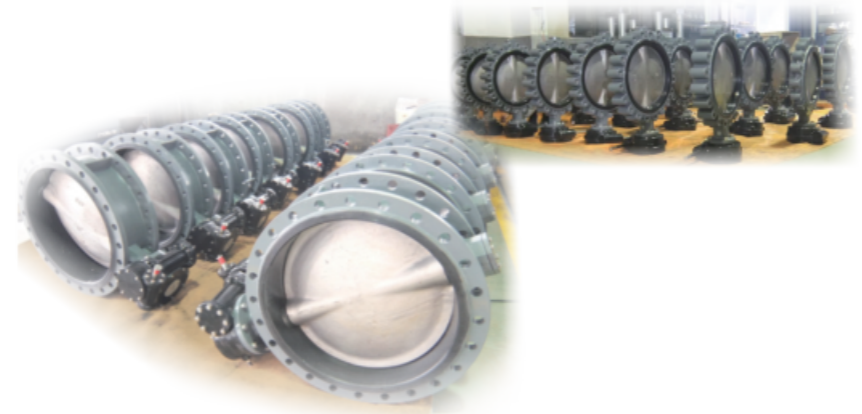
Important Stock, Express Delivery

► 充足库存，迅速发货

文森特拥有充足的标准型号阀门及其附件库存，公司紧凑有序的流程，高效国际运输管理以及迅速反应的物流平台，极大程度保证公司快速发货，按时发货。



Vincent has an important standard valves & accessories stock .The flow and international transport control, as well as its logistic platform reactivity allow. Vincent to do express delivery in order to respect the delivery time.



BUTTERFLY VALVE

蝶阀系列 ◯

820D 系列蝶阀

820D Series of butterfly valve

规格 Size:
DN50~DN800
温度 Temp:
-46℃~180℃
压力 PN:
0.6~1.6Mpa



870/871D 系列蝶阀

870/871D Series of butterfly valve

规格 Size:
DN25~DN600
温度 Size:
-46℃~180℃
压力 PN:
0.6~2.0Mpa



880D 系列蝶阀

880D Series of butterfly valve

规格 Size:
DN400~DN1200
温度 Temp:
-46℃~180℃
压力 PN:
0.6~1.6Mpa



890D 系列蝶阀

890D Series of butterfly valve

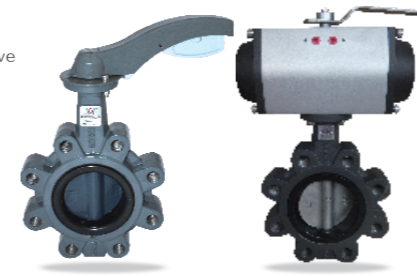
规格 Size:
DN50~DN1200
温度 Temp:
-46℃~180℃
压力 PN:
0.6~2.5Mpa



611D 系列蝶阀

611D Series of butterfly valve

规格 Size:
DN50~DN600
温度 Temp:
-46℃~150℃
压力 PN:
0.6~2.5Mpa



660D 系列蝶阀

660D Series of butterfly valve

规格 Size:
DN50~DN1200
温度 Temp:
-46℃~600℃
压力 PN:
1.6~4.0Mpa



670D 系列蝶阀

670D Series of butterfly valve

规格 Size:
DN50~DN600
温度 Temp:
-46℃~180℃
压力 PN:
0.6~1.6Mpa



680D 系列蝶阀

680D Series of butterfly valve

规格 Size:
DN50~DN300
温度 Temp:
-46℃~135℃
压力 PN:
1.0~1.6MPa



BALL VALVE 球阀

710Q系列球阀

710Q Series of ball valve

规格 Size:
DN6~DN100
温度 Temp:
-46°C~200°C
压力 PN:
0.6~1.6Mpa



720Q系列球阀

720Q Series of ball valve

规格 Size:
DN6~DN100
温度 Temp:
-46°C~200°C
压力 PN:
1.6~2.5Mpa



721Q系列球阀

721Q Series of ball valve

规格 Size:
DN15~DN100
温度 Temp:
-46°C~200°C
压力 PN:
1.0~4.0MPa



730Q系列球阀

730Q Series of ball valve

规格 Size:
DN15~DN100
温度 Temp:
-46°C~400°C
压力 PN:
1.0~4.0Mpa



731Q系列球阀

731Q Series of ball valve

规格 Size:
DN15~DN100
温度 Temp:
-46°C~400°C
压力 PN:
1.0~4.0Mpa



732Q系列球阀

732Q Series of ball valve

规格 Size:
DN6~DN100
温度 Temp:
-46°C~200°C
压力 PN:
1.6~4.0Mpa



740Q系列球阀

740Q Series of ball valve

规格 Size:
DN15~DN500
温度 Temp:
-46°C~400°C
压力 PN:
1.6~6.4Mpa



741Q系列球阀

741Q Series of ball valve

规格 Size:
DN15~DN200
温度 Temp:
-46°C~200°C
压力 PN:
1.6~6.4Mpa



750Q系列球阀

750Q Series of ball valve

规格 Size:
DN15~DN600
温度 Temp:
-46°C~950°C
压力 PN:
0.6~1.6Mpa



760Q/761Q系列球阀

760Q/761Q Series of check valve

规格 Size:
DN15~DN350
温度 Temp:
-46°C~200°C
压力 PN:
1.0~2.5Mpa



770Q系列球阀

770Q Series of check valve

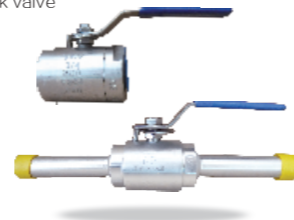
规格 Size:
DN15~DN350
温度 Temp:
-46°C~220°C
压力 PN:
1.0~6.4Mpa



780Q系列球阀

780Q Series of check valve

规格 Size:
DN15~DN300
温度 Temp:
-46°C~425°C
压力 PN:
2.5~42MPa

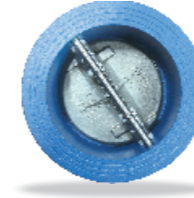


CHECK VALVE 止回阀系列

110H系列止回阀

110H Series of check valve

规格 Size:
DN40~DN1200
温度 Temp:
-45°C~150°C
压力 PN:
0.6~2.5Mpa



120H系列止回阀

120H Series of check valve

规格 Size:
DN50~DN300
温度 Temp:
-45°C~150°C
压力 PN:
0.6~2.5Mpa



130H系列止回阀

130H Series of check valve

规格 Size:
DN15~DN300
温度 Temp:
-45°C~400°C
压力 PN:
1.0~6.4Mpa



140H系列止回阀

140H Series of check valve

规格 Size:
DN50~DN300
温度 Temp:
-46°C~150°C
压力 PN:
0.6~1.6Mpa



150H系列止回阀

150H Series of check valve

规格 Size:
DN40~DN1200
温度 Temp:
-46°C~435°C
压力 PN:
0.6~4.0Mpa



160H系列止回阀

160H Series of check valve

规格 Size:
DN40~DN1200
温度 Temp:
-46°C~180°C
压力 PN:
0.6~4.0Mpa



170H系列止回阀

170H Series of check valve

规格 Size:
DN40~DN350
温度 Temp:
0°C~80°C
压力 PN:
1.0~2.5Mpa



平衡阀

Balanced valve

规格 Size:
DN50~DN600
温度 Temp:
-10°C~90°C
压力 PN:
1.0~1.6Mpa



水力控制阀

Water control valve

规格 Size:
DN25~DN800
温度 Temp:
-10°C~80°C
压力 PN:
1.0~2.5Mpa



200H系列止回阀

200H Series of check valve

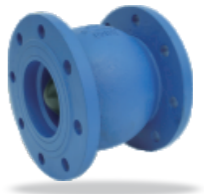
规格 Size:
DN50~DN600
温度 Temp:
0°C~80°C
压力 PN:
1.0~1.6Mpa



210H系列止回阀

210H Series of check valve

规格 Size:
DN40~DN600
温度 Temp:
0°C~80°C
压力 PN:
1.0~1.6Mpa



220H系列止回阀

220H Series of check valve

规格 Size:
DN50~DN300
温度 Temp:
-10°C~120°C
压力 PN:
1.0~1.6Mpa



GATE VALVE

闸阀系列

510Z/560Z系列闸阀

510Z / 560Z Series gate valve

规格 Size:
DN25 ~ DN50
温度 Temp:
-35°C ~ 150°C
压力 PN:
1.0 ~ 1.6Mpa



520Z系列闸阀

520Z Series of gate valve

规格 Size:
DN50 ~ DN1200
温度 Temp:
-10°C ~ 120°C
压力 PN:
1.0 ~ 2.5Mpa



520Z/521Z系列闸阀

520Z Series of gate valve

规格 Size:
DN50 ~ DN1200
温度 Temp:
-10°C ~ 120°C
压力 PN:
1.0 ~ 2.5Mpa



530Z系列闸阀

530Z Series of gate valve

规格 Size:
DN50 ~ 2000
温度 Temp:
-35°C ~ 250°C
压力 PN:
1.0Mpa



540Z系列闸阀

540Z Series of gate valve

规格 Size:
DN15 ~ DN1000
温度 Temp:
-46°C ~ 550°C
压力 PN:
1.6 ~ 2.5Mpa/
150 ~ 800LB



550Z/551Z系列闸阀

550Z Series of gate valve

规格 Size:
DN65 ~ DN200
温度 Temp:
-10°C ~ 120°C
压力 PN:
1.0 ~ 2.5Mpa



COMMON VALVE

通用阀门

100GL Y-过滤器

100GL Y-Strainer

口径 Size:
DN15 ~ DN2000
温度 Temp:
-20°C ~ 300°C
压力 PN:
1.0 ~ 4.2Mpa



JGD橡胶接头

JGD Rubber Flexible Joint

规格 Size:
DN15 ~ DN2600
温度 Temp:
-15°C ~ 100°C
压力 PN:
1.0 ~ 4.0Mpa



隔膜阀

Diaphragm Valve

规格 Size:
DN15 ~ DN200
温度 Temp:
0°C ~ 150°C
压力 PN:
0.6 ~ 1.6Mpa



410J系列截止阀

410J Series of globe valve

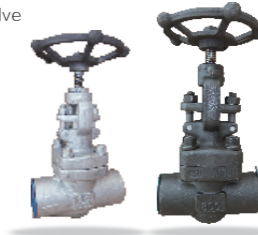
规格 Size:
DN15 ~ DN400
温度 Temp:
-46°C ~ 550°C
压力 PN:
1.6 ~ 2.5Mpa/
150 ~ 800LB



高压截止阀

High pressure cut valve

规格 Size:
DN8 ~ DN300
温度 Temp:
-45°C ~ 450°C
压力 PN:
0.25 ~ 42MPa



排气阀

Air valve

规格 Size:
DN15 ~ DN800
温度 Temp:
0°C ~ 80°C
压力 PN:
1.0 ~ 6.4MPa



VALVES SPECIALED FOR FIRE FIGHTING TRUCKS

消防车专用阀门系列

119D 系列蝶阀

119D Series of butterfly valve

规格 Size:
DN50 ~ DN150
温度 Temp:
-45°C ~ 150°C
压力 PN:
0.6 ~ 1.6Mpa



119Q方球阀

119Q square ball valve

规格 Size:
DN32 ~ DN80
温度 Temp:
-45°C ~ 150°C
压力 PN:
0.6 ~ 4.0Mpa



119H系列止回阀

119H Series of check valve

规格 Size:
DN50 ~ DN80
温度 Temp:
-45°C ~ 150°C
压力 PN:
1.0 ~ 3.0Mpa



119J系列截止阀

119J Series of globe valve

规格 Size:
DN50 ~ DN80
温度 Temp:
-45°C ~ 120°C
压力 PN:
1.0 ~ 2.5Mpa



调压阀

Pressure regulating valve

规格 Size:
DN20 ~ DN500
温度 Temp:
-196°C ~ 570°C
压力 PN:
0.6 ~ 6.4Mpa



调节阀

Control valve

规格 Size:
DN15 ~ DN400
温度 Temp:
-45°C ~ 550°C
压力 PN:
0.25 ~ 42MPa



疏水阀

Traps

规格 Size:
DN15 ~ DN150
温度 Temp:
0°C ~ 200°C
压力 PN:
1.0 ~ 2.5Mpa



气动塑料蝶阀/球阀

Pneumatic plastic butterfly valve / ball valve

规格 Size:
DN15 ~ DN600
温度 Temp:
-45°C ~ 180°C
压力 PN:
0.25 ~ 1.0Mpa



620D通风蝶阀

Air Butterfly Valve

规格 Size:
DN80 ~ DN3200
温度 Temp:
-45°C ~ 450°C
压力 PN:
0.25 ~ 1.6Mpa



信号反馈蝶阀

Signal feedback butterfly valve

规格 Size:
DN25 ~ DN1200
温度 Temp:
-45°C ~ 180°C
压力 PN:
0.25 ~ 2.5Mpa



PNEUMATIC ACTUATOR 气动执行器

CP1系列执行器

CP1 Series of pneumatic actuator

规格 Size:
45~400
温度 Temp:
-45℃~150℃
压力 PN:
0.25~0.8Mpa



CP2系列执行器

CP2 Series of pneumatic actuator

规格 Size:
45~400
温度 Temp:
-45℃~150℃
压力 PN:
0.25~0.8Mpa



气动元件

Pneumatic Components



回信器

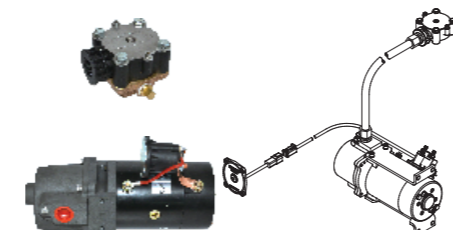
Limit Switch

输出信号 Output signal:
4~20mADC
温度 Temp:
-20℃~80℃



真空泵

Vacuum pump



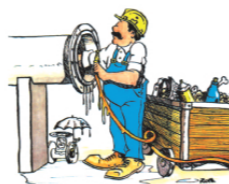
GENERAL INSTRUCTIONS

安装指南

▶ 清洁管路 Clean the pipes

安装完毕启动系统试运行前,应仔细清洁所有的管件(根据介质类型使用水,空气,蒸汽等)必须清除管件中的所有杂质,尤其是焊渣有可能会严重损坏阀门的密封座。

Before the tests and starting of the installations, carry out the abundant rinsing of piping (water, air, steam if compatible). It is essential to eliminate all the particles and various objects which could remain in the pipes and particularly welding residues which could definitely damage the valve seat.



▶ 管路对中 Align Pipings

确保管路已对中,不能靠阀门来纠正对中问题:这有可能造成泄露或操作问题,甚至断裂。

Check piping alignment. Do not rely on the valves to correct bad alignments: risk of leakage, operating defect or even breaking.



▶ 清洁阀座 Clean the gasket seat

安装前,必须确保阀座的清洁,不能有任何的划痕,否则影响密封效果。

Before assembling, take care that the gasket seats are perfectly clean free from stripes prejudicial to good tightness.



▶ 避免“水锤”现象 To avoid the “water hammers”

“水锤”可能造成突然的压力增加,“水锤”造成的阀门的损坏是非常严重的:阀板开裂,阀轴变形,及其它部件的损坏。造成“水锤”的原因很多:泵的启动和阀门突然的关闭是最常见的原因,注意:在系统启动试运行,采取所有必要的预防措施,减缓带驱动头的阀门的操作。

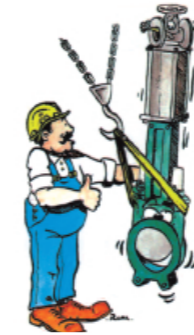
A water hammer can generate a rise in pressure of extreme brutality. The damage caused by a water hammer is considerable: butterfly valve disc splits, axes deformed, destroyed various apparatuses. The causes of the water hammers are very varied but generally: the starting of pump and the sudden closing of valve. Attention, when starting the installation or testing, take all the necessary precautions **slow down** motorized valves.

GENERAL INSTRUCTIONS 安装指南

▶ 小心搬运 Handle the valves with precaution

小心阀门的搬运,用吊索要在阀体上,不要在手轮或驱动头上起吊,小心碰撞。

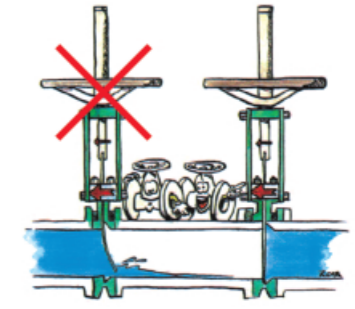
Sling valves by the body. Do not hang at the handwheel or the servo-moto. Attention with the shocks.



▶ 遵守安装方向 Respect assembly direction

一些阀门使用是有方向性的(如止回阀,平板阀等),安装时确认安装方向符合箭头指向或安装指南。

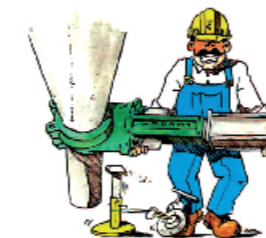
Some valves are one-way (non-return valve, knife gate valves, etc). Take care of an assembly in conformity with the arrow direction or of the instructions of assembly.



▶ 阀门的支撑 Support the valves

在某些情况下(如结构长度很长,有很重的驱动头等),要预先准备好必要的阀门安装时的支撑架。这样能避免阀门承受过大的压力以致快速损坏操作螺丝和阀座。

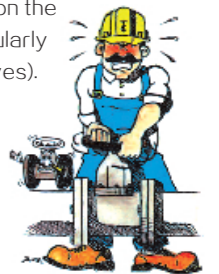
In certain cases, valves of large length, heavy servo-motor, it can be essential to provide supports which will avoid tensions prejudicial to the operating and risking the fast deterioration of the stem and of the tightness.



▶ 遵守压紧扭矩 To respect the tightening torques

过大的压紧扭矩对阀门是有害的,这将有可能给阀座带来压痕或造成过快的磨损,尤其对橡胶弹性密封(隔膜阀)。

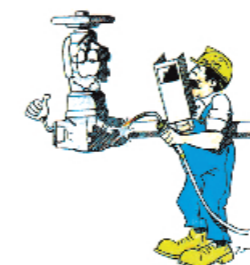
It is prejudicial applying higher tightening torque than needed. This can create markings on the seats and, premature wears particularly for the rubber seat (diaphragm valves).



▶ 阀门开启状态焊接 Weld valves opened

无论是铸钢还是不锈钢阀门,焊接前应确认阀门是打开的。

Take care, when welding steel or stainless valves, that the position is open.



▶ 谨慎移动阀门 To handle valve with precaution

移动阀门时要小心不要破坏涂层和保护层,碰撞及摩擦会破坏涂层招致腐蚀。

Take care of the coatings and protections. To avoid shocks and frictions which, by destroying the coatings, create starters of corrosion.



GENERAL INSTRUCTIONS 安装指南

▶ 在良好的环境中保存阀门 Store the equipment under good conditions

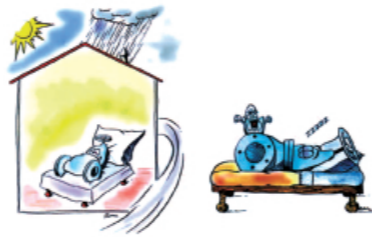
阀门应保存在室内:

避潮,避雨: 以防被腐蚀;

避风,避沙: 以防沙粒或其它硬物进入后将会严重损坏密封座和导轨;

避光,避热: 以防破坏涂层,尤其是对紫外线格外敏感塑料阀门非常有害。含橡胶件的阀门应总在开启状态下保存。

金属阀门应在关闭状态下保存(除非有特殊要求):避免杂物进入阀体内腔。球阀应在开启状态下保存。保存时保留阀门的各种塑料保护套,但安装时不要忘记拿去这些保护套。



The valves must be stored protected from:

Humidity and rain to avoid corrosion;

Wind,sand: to avoid the penetration of solid particles whose presence is catastrophic for the tightness;

Sunshine and heat: they damage the coatings,particularly harmful for plastic valves and fittings very sensitive to the ultraviolet.

Valves with rubber seat must always be stored half-opened.

The apparatuses with metal seat must be stored closed (except particular specifications) to avoid the penetration of the particles in internal volumes.

Ball valves must be stored in open position.

Preserve the apparatuses with their plastic caps which should be taken away when mounting the valves.

▶ 保用期

产品保用期: 除非其它异议条款并符合保用期的有关法律规定 VCV的产品有12个月的保用期。保用期从产由客户自由支配时算起。保修只包含失效的部件客户应及时书面通知VCV有缺陷的产品并提供相关的证明材料。

产品保用期不包含: ①产品在使用过程中的自然磨损 ②由下列情况引发的事或损坏: 擅自改动VCV产品;不遵守产品的安装, 使用和维修说明;缺乏应有的检查, 储存或维护措施;安装和使用过程中违反行业操作共识; ③未付货款的产品。

▶ 总则

使用: ①设备在运行前要检查, 确保无误。②当温度超过60℃, 不要接触受压设备, 并准备相应的保护措施。③使用合适的法兰, ④根据ISO 8573-1标准。压缩空气应清洁干燥。并含一定的润滑油;⑤气动头和电磁阀所用的压缩空气应符合ISO8573-1 4/3/4的洁净度标准;⑥而控制用的空气(气动定位器)应符合ISO8573-1 2/3/3的洁净度标准。

维护和检查: ①阀门定期年检,②每次拆装要更换密封件,③所有的维护工作在正常大气压力下进行,④切断驱动器的驱动能源。

Guarantee

Unless otherwise advised and without prejudice to the legal guarantee,VCV offer a guarantee of twelve months from the date of placing the goods at disposal in our premises,it covers only the repairing of the goods stated defective.The customer must inform VCV by letter of attributed vices on the goods and supply any justification on the subject.

The guarantee does not apply to: ①the components,which by their materials nature or by their function suffer erosion ②in case of deterioration or accidents caused by:any modification or intervention on the original product;the no-respect of the installation,the use or the maintenance instructions and defect on supervision, in storage or maintenance;an installation or use not in accordance with the book . ③in case of no-payment.

Instruction Generals

Use: ①To bring into service the installation after control.②For temperatures higher than 60℃ do not touch the body of the equipment under pressure and provide a protection.③To use adapted flanges.④The used compressed air must be clean,dry and lubricated according to the standard ISO 8573-1;⑤For actuator and solenoid valve,use compressed air conforming tothe purity class of ISO 8573-1 4/3/4;⑥For the air of control(pneumatic positioner),use compressed air conforming to the purity class of ISO 8573-1 2/3/3.

Maintenance and control: ①Control the valves yearly.②Change the gaskets after each disassembling.③Any maintenance action must be carried out when the installation is in the atmospheric pressure.④Cut energy supply of the actuators.

Achievements and widely application fields 业绩及应用领域

电厂 Power Plant
华电 Huadian

冶金 Metallurgy 冶金
委内瑞拉钢厂 Venezuela Steel Works

暖通空调 HVAC
TCL科技园 TCL Science Park

海水淡化 Desalination
青岛百发 Qingdao Baifa

水处理 Water Treatment
友达光电 AJO Optronics

通讯 Telecommunication 通讯
华为(数据机房) Huawei

燃气 Gas
华润燃气 Huarun Gas

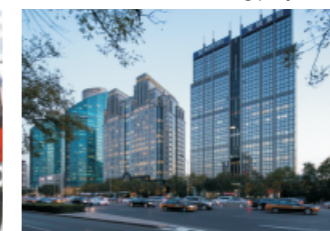
制冷和换热 Refrigeration and heat 制冷和换热
蒙牛 Mengniu

▼ 消防 Fire Fighting



中国人民武装警察部队
C A P F

▼ 楼宇工程 Building projects



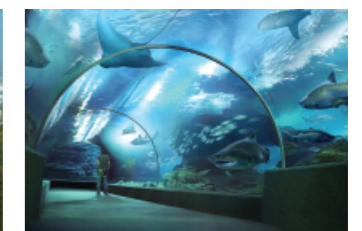
宝钢大厦
Baoshan Iron and Steel Building

▼ 核工业 Nuclear Industry



核工业404所
The Nuclear Industry 404

▼ 维生系统 Life Sustaining System



海南海洋馆
Hainan Aquarium